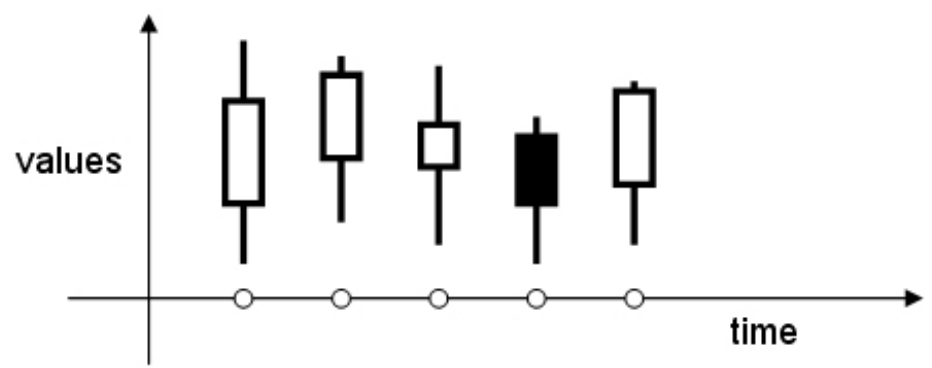


Candlestick charts (chandeliers japonais)

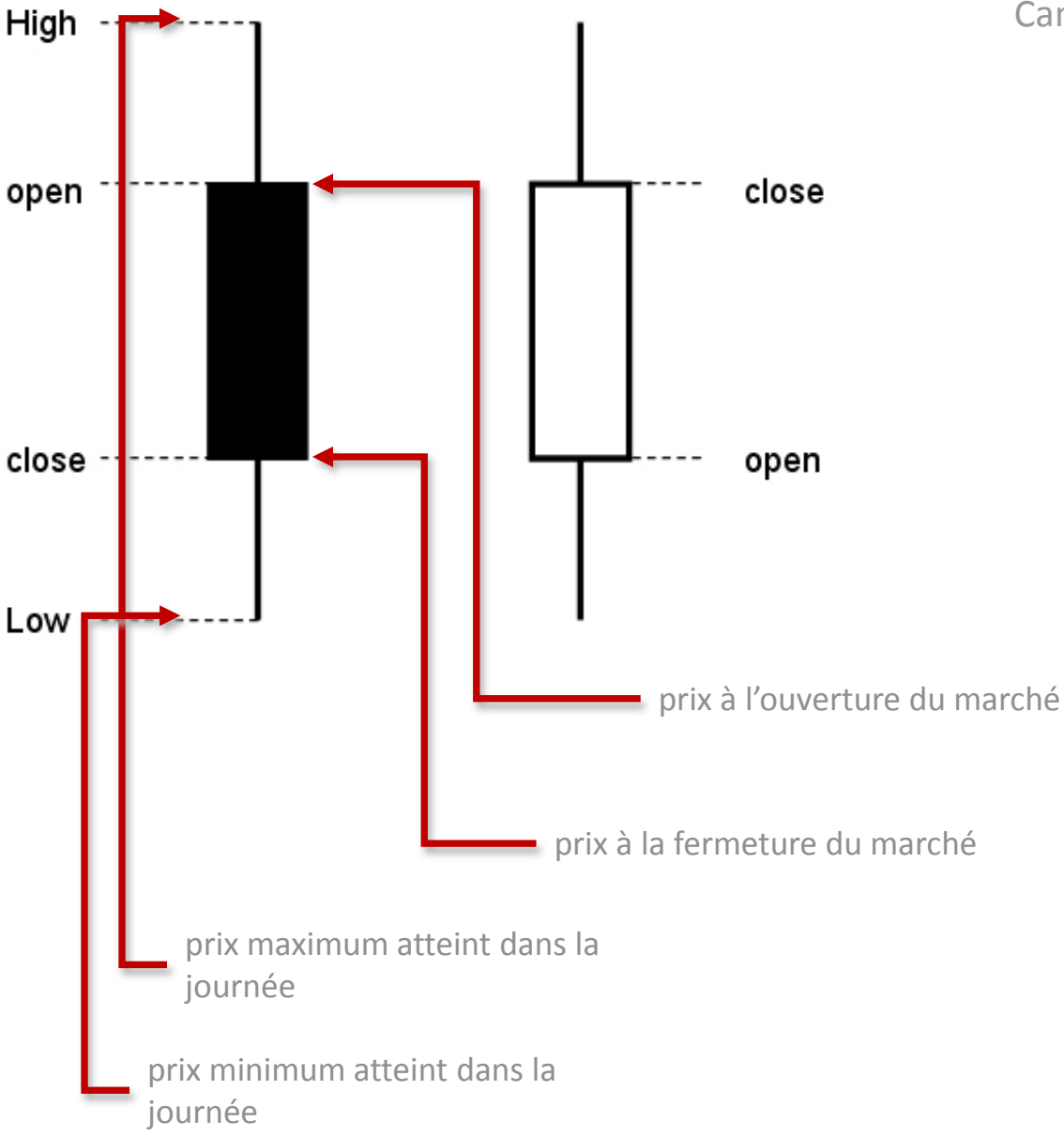
Movement of prices of a good over a day.



Candlestick charts
Munehisa Homma (18th c.)

http://en.wikipedia.org/wiki/Candlestick_chart

Candlestick charts (chandeliers japonais)

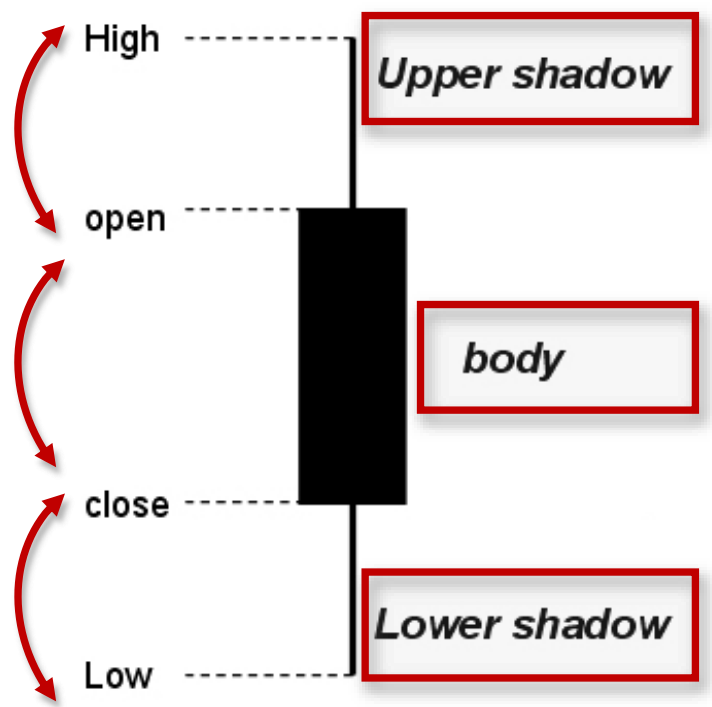


Movement of prices of a good over a day.

Candlestick charts
Munehisa Homma (18th c.)

<http://en.wikipedia.org/wiki/Candlestick_chart>





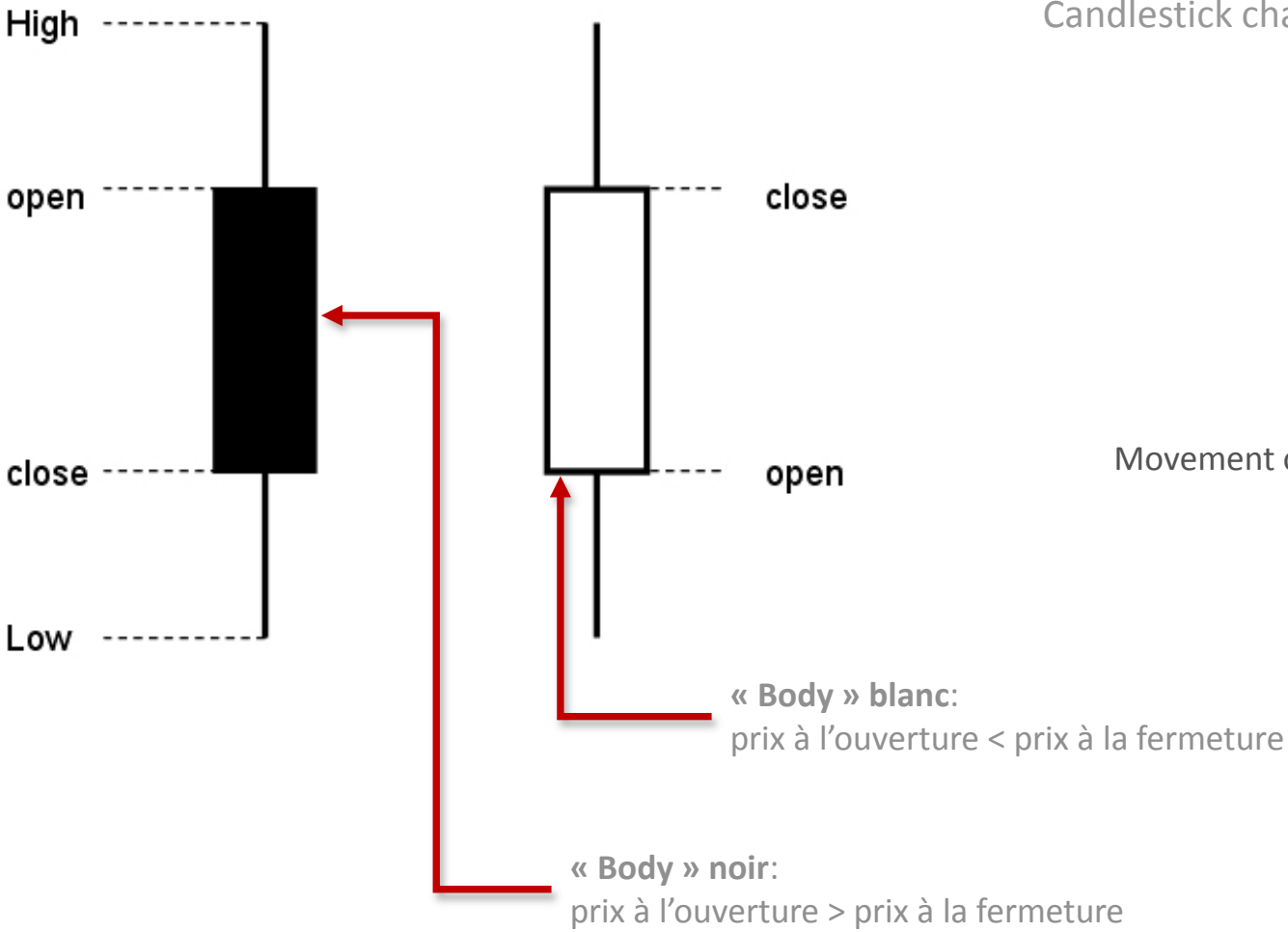
Candlestick charts (chandeliers japonais)

Movement of prices of a good over a day.

Candlestick charts
Munehisa Homma (18th c.)

<http://en.wikipedia.org/wiki/Candlestick_chart>

Candlestick charts (chandeliers japonais)



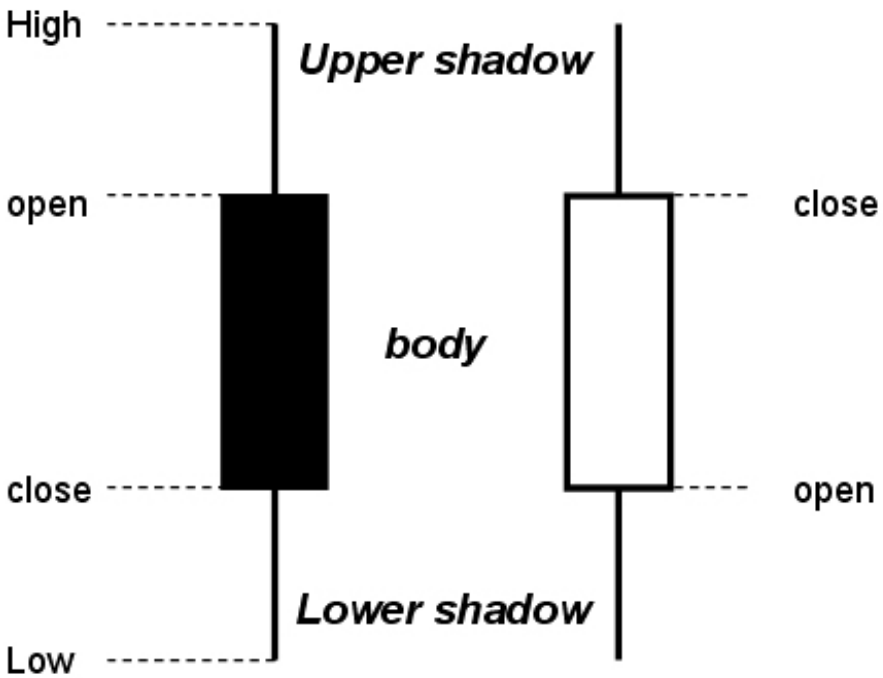
Movement of prices of a good over a day.

Candlestick charts
Munehisa Homma (18th c.)

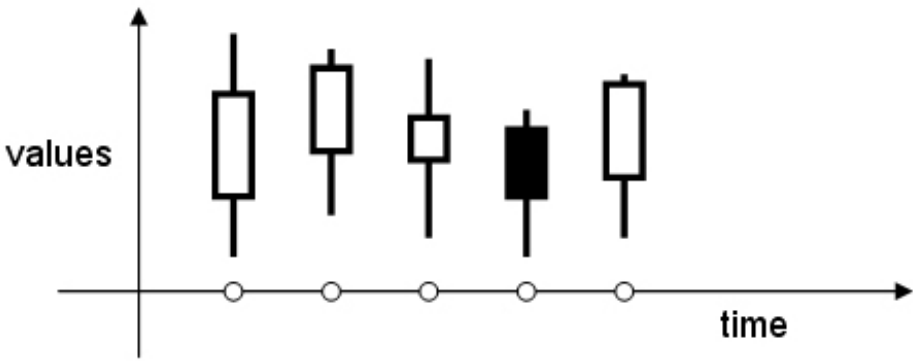
<http://en.wikipedia.org/wiki/Candlestick_chart>



Candlestick charts (chandeliers japonais)



Movement of prices of a good over a day.



Synthétisation, sur 5 jours

*Candlestick charts
Munehisa Homma (18th c.)*

<http://en.wikipedia.org/wiki/Candlestick_chart>



Candlestick charts (chandeliers japonais)



Concept toujours utilisé, avec des variantes / adaptations graphiques

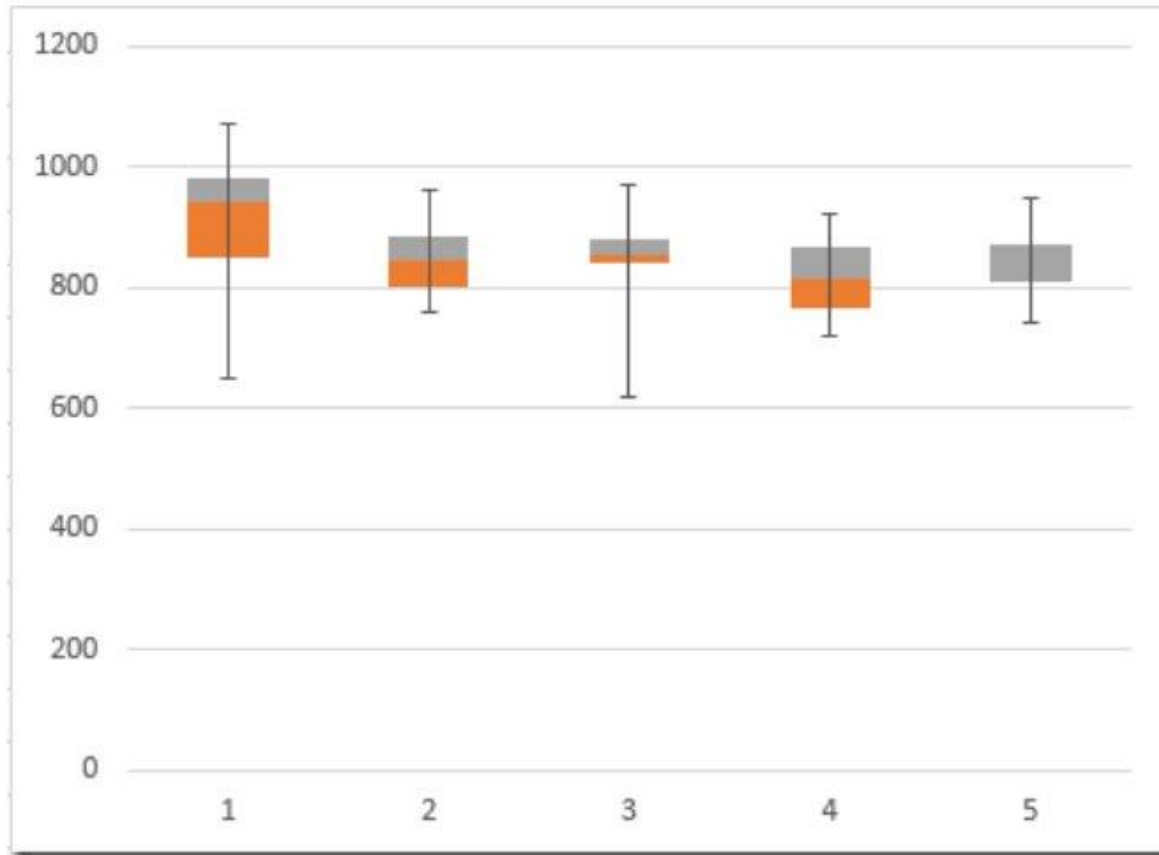
e.g. tutoriel Python ad-hoc

<<https://pythonprogramming.net/candlestick-ohlc-graph-matplotlib-tutorial/>>

Candlestick charts
Munehisa Homma (18th c.)

<http://en.wikipedia.org/wiki/Candlestick_chart>

Candlestick charts (chandeliers japonais)



Variante, implémentée dans Excel,

La partie "Body", ne représente plus un cours ouverture /fermeture

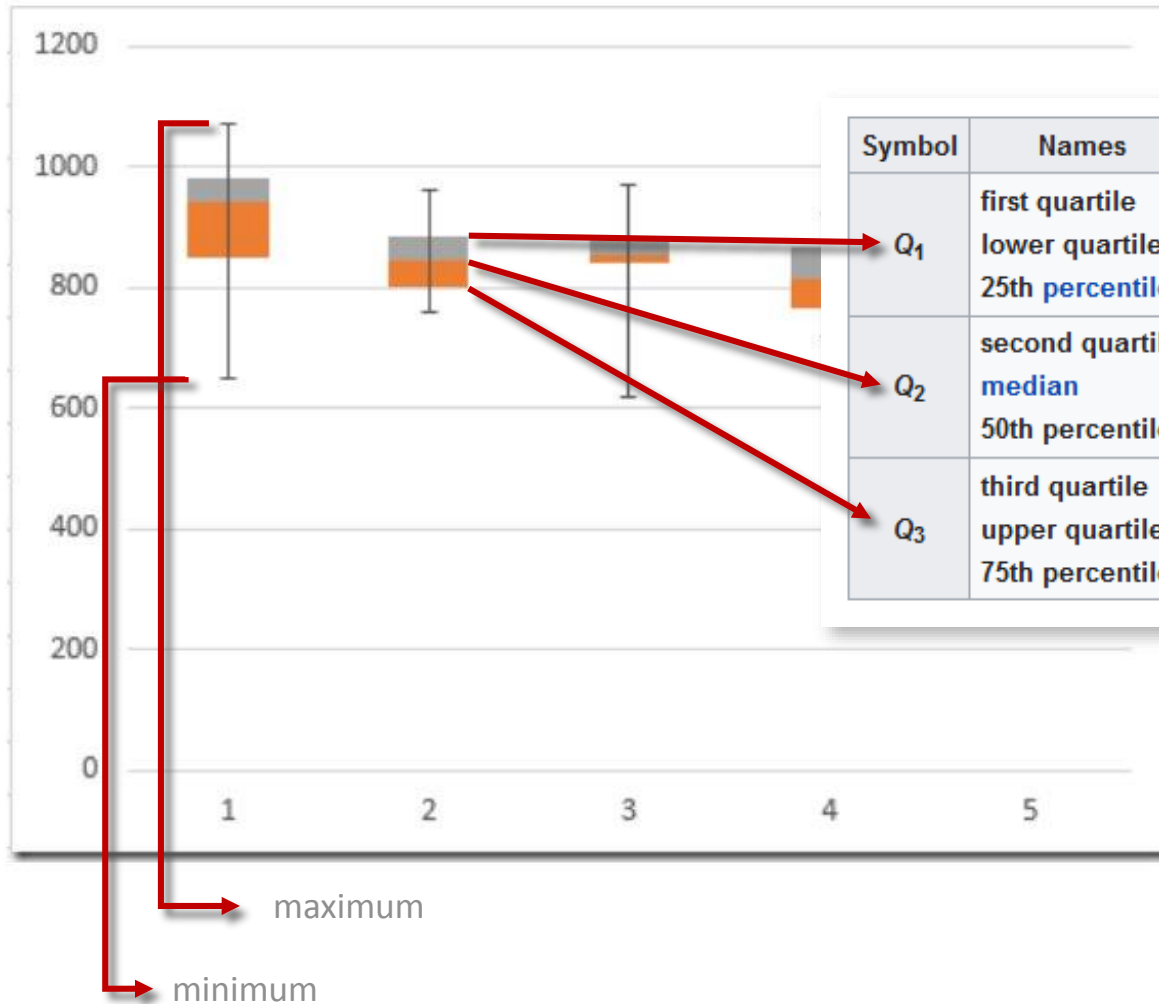
Le dispositif n'est plus forcément une série temporelle, mais une série de "valeurs" comportant des MAX/MIN/AVG

<<https://nathanbrixius.wordpress.com/2014/03/10/beautiful-box-plots-in-excel-2013/>>

Candlestick charts
Munehisa Homma (18th c.)

<http://en.wikipedia.org/wiki/Candlestick_chart>

Candlestick charts (chandeliers japonais)



| Symbol | Names | Definition |
|--------|---|--|
| Q_1 | first quartile lower quartile 25th percentile | splits off the lowest 25% of data from the highest 75% |
| Q_2 | second quartile median 50th percentile | cuts data set in half |
| Q_3 | third quartile upper quartile 75th percentile | splits off the highest 25% of data from the lowest 75% |

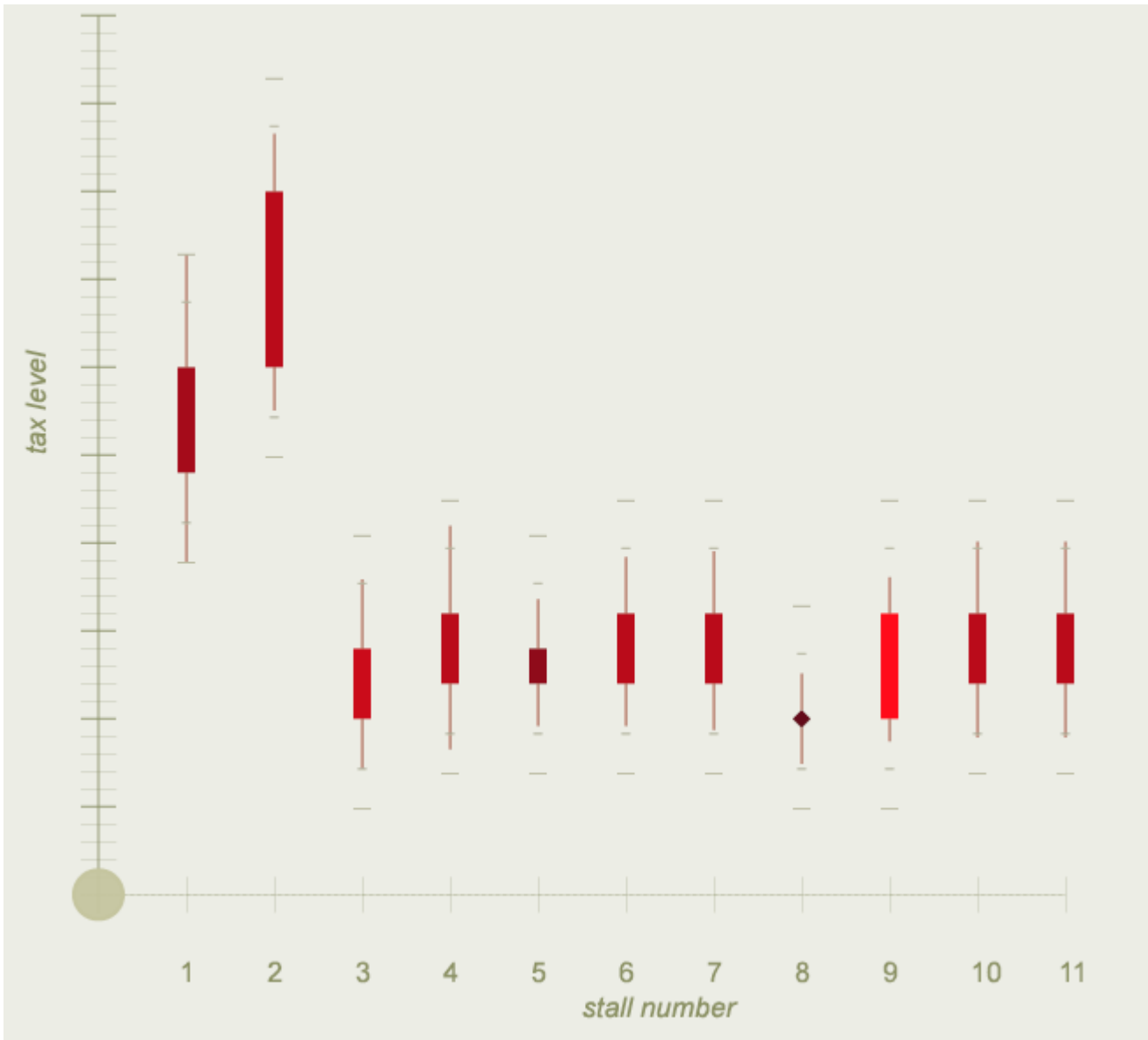
<<https://en.wikipedia.org/wiki/Quartile>>
<<https://fr.wikipedia.org/wiki/Quartile>>

<<https://nathanbrixius.wordpress.com/2014/03/10/beautiful-box-plots-in-excel-2013/>>

Candlestick charts
Munehisa Homma (18th c.)

<http://en.wikipedia.org/wiki/Candlestick_chart>

Candlestick charts (chandeliers japonais)



Application à des données
« spatio-historiques »
(inventaire daté de 1760 -
données: surface d'échoppes,
niveau de taxation avant et
après l'inventaire)

Jean-Yves Blaise, Iwona Dudek. Can
simplicity help?. ACM International
Conference Proceedings Series, 2014.
< <https://halshs.archives-ouvertes.fr/halshs-01074206>>

Candlestick charts
Munehisa Homma (18th c.)

<http://en.wikipedia.org/wiki/Candlestick_chart>